

IT'S NOT JUST ANOTHER
MONO LASER PRINTER



IT'S A DOORWAY TO
INCREASED PROFITS

Possibilities you didn't expect



It's the doorway to an even more productive business.

Introducing the new professional workgroup range of mono laser printers from Brother; the latest line-up designed to open up even more possibilities.

The new range offers everything you expect from a professional printer, including high quality output, print and scan speeds of up to 50ppm, superb reliability and low total cost of ownership.

It also offers something you definitely wouldn't: the ability to fit in virtually anywhere and get to work fast.

That's because the range has been developed with the flexibility to adapt to the different requirements of virtually any size workgroup, and the capability to be customised via open interface software to integrate with any type of network.

With printers this adaptable on your team, the possibilities are endless.

Contents

| | |
|-------------------------|---|
| Introduction | 1 |
| Why Brother? | 2 |
| Customer Benefits | 3 |
| Range Overview | 4 |
| Brother Print Solutions | 5 |
| Compatibility | 6 |
| Brother Supplies | 7 |
| Range at a Glance | 8 |
| Brother Environment | 9 |

Possibilities you wouldn't expect
www.brother.eu/L6000





Designed to perform in every department.

We believe that technology should meet the changing needs of businesses. To help us achieve this, we've listened to what our customers want and developed new products to not just meet, but exceed their requirements.

In the new 6000 range, you'll find solutions designed to work at every level of your organisation.

More control for IT Departments

With Brother Solutions Interface (BSI) on board, the Brother 6000 range is built to seamlessly integrate. This allows bespoke software solutions to be easily implemented and is server-run for easy deployment across a range of devices. It also allows customisation of device user interfaces, granting full control of print, scan and other functions for complete integration.

Better economy for the Finance Department

Enterprise-level office technology is now available without the enterprise-level price tag. Near Field Communication (NFC) gives you better document security and improved user authentication for pull printing without expensive card readers. Plus, cost per page is lowered thanks to longer-lasting toner and more efficient design.

Improved business efficiency for CEOs

With fast A4 print and scan speeds of up to 50ppm, long waits for the printer become a thing of the past, and a large 12.3cm touchscreen (DCP and MFC models) featuring a more intuitive user interface helps make operation quicker and easier. While customisation options like extra paper input trays, mailbox with sort and stack functions and up to four output trays also help reduce time spent loading paper and collating output.

Excellent print quality and reliability for everyone

Of course there's no point employing a business-class print solution that doesn't deliver equally professional results. So another thing you can rely on 100% is crisp, sharp mono print quality that's amongst the best you'll find in a printer in this class – plus reliability levels that means it will be delivered day in day out, month after month.

Built to deliver at every level.

The technology included in the 6000 range isn't just packed with features. It's loaded with benefits designed to take your organisation to the next level.

- User-friendly 12.3cm touchscreen, makes operation both intuitive and easy
- Fast Gigabit Ethernet network speed to keep data flowing
- Less time waiting for prints with output speed of up to 50ppm
- Impressive print volumes of up to 10,000 pages per month, to keep up with the busiest workgroups
- Paper input options flexible enough to adapt to the most demanding requirements, with 520 page standard tray and input sensor and optional 520 x 2 / 250 x 3 / 520 x 4 Tower Tray
- Install the optional 4 bin mailbox unit and gain additional 4 paper output trays for fast, convenient document collation
- Advance paper output options including 250 standard output tray, output sensor and optional mailbox
- Advance scan capabilities with 80 Sheet ADF, to handle up to 50ppm and up to 100ipm 2-sided scanning, to get large documents scanned fast
- Large memory of 1GB handles multiple documents, from various users for minimum disruption to workflow
- Toner cartridges go further with up to 12k page inbox toner and optional up to 20k page ultra high yield cartridges*

* Approximate cartridge yield is declared in accordance with ISO/IEC 19752



brother

Thinking big with Brother.

At Brother, we believe our customers' business is our business. We're dedicated to overcoming obstacles to productivity and creating new solutions to print problems to help organisations of all sizes achieve their goals.

That's why choosing us as your print partner can make a big difference all round.

Four ways the 6000 range can help every business

Built on Brother's proven track record in mono laser printers, the range is designed to provide improvements in four key areas:

1 Reliability

The 6000 range is built to perform, with up to 150,000 maximum monthly print volume (up to 10,000 recommended monthly volume) to meet the demands of high output workgroups. Units have also been totally remodelled to be more resilient and hardwearing to brush off the inevitable knocks and bumps of busy workspaces.

2 Productivity

With a first page out time of less than 7.5 seconds and an impressively quick print speed of up to 50ppm, working fast is second nature. They work harder too, with paper input of up to 2,650 and output capacity of up to 1,050 sheets using the optional mailbox with stacker and sorter functions.

3 Workflow

Design improvements include an 80 page auto document feeder that enables high speed 2-sided scanning straight into a document management system for less queuing and more doing. Along with a more intuitive and user-friendly interface and improved support for different media and connectors to popular cloud-based services such as Microsoft SharePoint, it's just what your workgroups have been waiting for.

4 Security

Savvy businesses should settle for nothing less than the highest levels of security. Active Directory integration, Secure Function Lock 3.0 and Internet Protocol Security (IPsec) ensure they are achieved. For added peace of mind, the range also features Print Archive, Secure Reset and Certificate Management and Near Field Communication (NFC) functionality for secure user access and authentication.

Flexible hardware, adaptable software.

Convenient paper handling options

To help your workgroup requirements and document handling needs, a choice of configuration options are available to improve paper input and output collation. These include:

Input

- Maximum paper input level of 2,650 sheets with tower tray

Output

- Mailbox assigns bins to users or groups using time-saving sorter and stacker features (up to a maximum of 1,050 sheets)

Designed to integrate

The 6000 range has been designed to fit into any size network in any size office or workgroup to seamlessly integrate and offer:

- Open interface for maximum software customisation potential
- Ultimate connectivity thanks to cloud connectivity and Brother Solutions Interface





Total cost of ownership that's equally attractive

We've not just equipped the 6000 range with features designed to turn heads. We've also made sure their total cost of ownership gives them an even bigger advantage over the competition.

In fact, with new Brother ultra high yield cartridges, up to 20,000 pages can be printed before replacement to keep running costs down.

At your side

Whether it's driving innovation in printer design, or providing some of the best technical support and after sales service around, it's our promise to be at your side. When it comes to warranty, you can relax knowing that you're protected by a 12-month warranty with extended warranties available if requested. And if something does go wrong, we're always here to help you put it right with expert help and support available online or by phone to get you back in business fast.

Flexible print solutions from Brother.

Our print solutions are exciting packages of innovation designed to make doing business easier. By offering a range of simple print solutions to help you maximise print efficiency and minimise costs.

Professional Business Solutions

Complete print management with PrintSmart Cost Control

PrintSmart Cost Control provides complete visibility of your organisations printer usage and print behaviour. The simple user interface and reporting capability enables greater control over printing expenditure, which reduces print costs and optimises operational efficiency.

Total print security with PrintSmart Secure Pro

PrintSmart Secure Pro builds on the functionality of PrintSmart Cost Control, enabling IT staff to enhance print security through its pull printing and secure release capability. Mobile printing and enhanced scanning also add value to any SMB environment.

Simple mobile printing with PrintSmart Mobile

PrintSmart Mobile is a cloud based printing solution that provides simple print access for employees and guests. Ideal for any business

with a mobile workforce or Bring Your Own Device (BYOD) policy, it allows users to print from any mobile devices, quickly, simply and securely.

Managed Print Services

The easy way to help you improve productivity and streamline your budget. Providing total peace of mind, the service is based on hardware that can be purchased or leased and supplies paid for on a 'per click' basis. A sensible way to improve cashflow whilst reducing total printing costs.

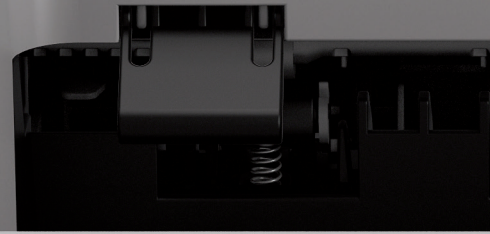
Professional Business Services

To ensure the ongoing optimisation of a print fleet, we offer a range of services that cover each stage of the buying cycle – assessment, transition and optimisation – ensuring that your needs are met.

HL-L6400DW



WIFI



The Brother 6000 range.

With nine versatile models to choose from, each offering different levels of specification, high-quality, high-volume mono printing is now within reach of every size organisation.

MFC-L6900DW

Up to 50 ppm print and scan speeds, plus copy and fax capability and paper tray upgrade options make the MFC-L6900DW a key team member in busy offices.

- Print, Scan, Copy, Fax
- Up to 50ppm Print Speed
- Up to 50ppm (100ipm) Scan speed
- 520 Sheet Paper Input
- 250 Sheet Paper Output
- 80 Sheet ADF
- 12.3cm Touchscreen
- NFC (for mobile print & card authentication)
- USB, Wireless & Gigabit wired Network
- Up to 20k Toner (12k inbox)*
- 2 x Optional Lower Tray / Tower Tray

Need extra paper input capacity? Model MFC-L6900DWT provides the features above plus an extra paper tray for 2 x 520 sheet input.



MFC-L6800DW

Multi function features allow efficient printing, scanning, copying and faxing with optional paper tray upgrades to serve larger workgroups.

- Print, Scan, Copy, Fax
- Up to 46ppm Print Speed
- Up to 50ppm (100ipm) Scan Speed
- 520 Sheet Paper Input
- 250 Sheet Paper Output
- 80 Sheet ADF
- 12.3cm Touchscreen
- NFC (for mobile print & card authentication)
- USB, Wireless & Gigabit wired Network
- Up to 12k Toner (8k inbox)*
- 2 x Optional Lower Tray / Tower Tray

Need extra paper input capacity? Model MFC-L6800DWT provides the features above plus an extra paper tray for 2 x 520 sheet input.



DCP-L6600DW

Print, scan and copy more efficiently with fast operating speeds and a large, user-friendly 12.3cm touchscreen display.

- Print, Scan, Copy
- Up to 46ppm Print Speed
- Up to 50ppm (100ipm) Scan Speed
- 520 Sheet Paper Input
- 250 Sheet Paper Output
- 80 Sheet ADF
- 12.3cm Touchscreen
- NFC (for mobile print & card authentication)
- USB, Wireless & Gigabit wired Network
- Up to 12k Toner (8k inbox)*
- 2 x Optional Lower Tray / Tower Tray



HL-L6400DW

Fast 50ppm print capability make this model a capable performer that's also versatile enough to handle extra paper trays and 4 bin mailbox if required.

- Print
- Up to 50ppm Print Speed
- 520 Sheet Paper Input
- 250 Sheet Paper Output
- 4.5cm Touchscreen
- NFC (for mobile print & card authentication)
- USB, Wireless & Gigabit wired Network
- Up to 20k Toner (12k inbox)*
- 3 x Optional 250 sheet Lower Tray / 2 x Optional 520 sheet Lower Tray / Tower Tray
- Optional 4 bin Mailbox

Need extra paper input capacity? Model HL-L6400DWT provides the features above plus an extra paper tray for 2 x 520 sheet input.



HL-L6300DW

Built for business, stunning results and enhanced paper handling options are all part of the capable HL-L6300DW package.

- Print
- Up to 46ppm Print Speed
- 520 Sheet Paper Input
- 250 Sheet Paper Output
- 4.5cm Touchscreen
- NFC (for mobile print & card authentication)
- USB, Wireless & Gigabit wired Network
- Up to 12k Toner (8k inbox)*
- 3 x Optional 250 sheet Lower Tray / 2 x Optional 520 sheet Lower Tray / Tower Tray
- Optional 4 bin Mailbox

Need extra paper input capacity? Model HL-L6300DWT provides the features above plus an extra paper tray for 2 x 520 sheet input.



Professional accessories available.

LT-5505

- 250 sheet optional paper tray
- 3 x 250 sheet trays supported on printers
- 2 x 250 sheet trays supported on DCP/MFC



LT-6505

- 520 sheet optional paper tray
- 2 x 520 sheet trays supported



TT-4000

- 4 x 520 sheet tower tray with stabiliser base



MX-4000

- 4 bin Mailbox
- 100 sheets x 4 bins, convertible to 400 sheets x 2 bins
- Mailbox supported on printers



Working harder for the environment.

Brother Earth

Brother Earth is our online resource designed to let everyone know all about our latest green product innovations and global environmental projects and let them know how they can get involved. Whether it's finding out how we're lowering noise emissions in our sewing machines, helping local residents clean up rivers in the Philippines, or any of the other thousands of environmental initiatives we're involved with, find out more at brotherearth.com

Brother Environmental Activities

Brother International Europe have built a strong partnership with charity Cool Earth since 2009 to directly support biodiversity projects in the Amazon Rainforests of Peru. Cool Earth partner with the indigenous

communities living on the frontline of deforestation, putting funds directly into the rainforest communities, linking villages together to form a shield, protecting millions of acres of forest.

Brother's Eco-Rewards initiative encourages customers throughout Europe to use their free return and recycle scheme to ensure that Brother ink and toner cartridges and drums are disposed of and recycled responsibly. In return for doing this, Brother sponsors the protection of trees in the Peruvian rainforest.

This pledge enables them to recycle materials as part of their commitment to the environment while encouraging others to consider their own impact on the environment around them.



A young boy with dark hair, wearing a red t-shirt with a white graphic on the back, is sitting in a teal boat. He is looking out over a body of water towards a large, forested mountain range under a bright, cloudy sky. The scene is captured from behind him, showing his profile and the boat's edge.

“Our forest is not for sale. We have to continue to protect what our ancestors have left us. We’re here to protect the forest, for the good of our children, for their children to come.”

**Julián Quispe Carbólico,
Tinkareni Village, Peru**

brother
at your side